



*Where Everything Comes Together!*



# AUTOMOTIVE

M.I.S. engineers are industry experts with decades of OEM Automotive focus, mindset, and discipline.

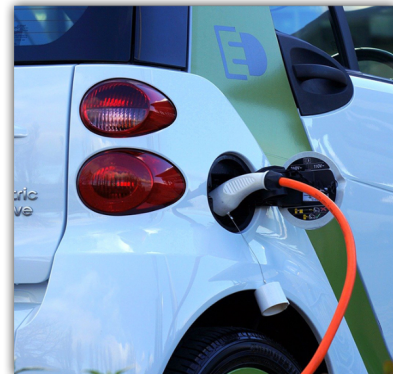
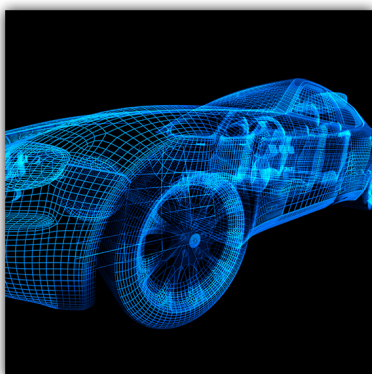
Our business focus is to provide customers with high-reliability OEM electronics design and manufacturing services. We open access to advanced, proprietary products and technologies. Since 2014, when M.I.S. registered its first patent for a drive system, we've supported our customers with turnkey product designs: design goals, DFMEAs, tester specifications, supplemental resources, problem resolution, and cost reduction:

- System Design and Product Specification
- Mechanical and Industrial Design
- Electrical Design and PCB Layout
- Software Design
- Tester Design and Specification
- Engineering Analysis
- DVP&R Creation, and Design/Production Validation Testing Services

## ADVANCED SENSOR TECHNOLOGY

M.I.S. Automotive develops Advanced Sensor Technologies, including custom solutions that combine technologies for increased accuracy and reliability

- Radar Sensors
- Ultrasonic Sensors
- Infrared Sensors
- Advanced Camera and Vision Technologies
- Lane Change Warning
- Forward Collision Warning
- Adaptive Cruise Control
- Blind Spot Warning
- Back Up Assist
- Cross Path Detection
- Rear Collision Warning
- Back Over Warning
- Electric Vehicle (EV) and Vehicle Charging Systems
- Biometrics





*Where Everything Comes Together!*



## SIX SIGMA MANUFACTURING PROCESSES

M.I.S. Automotive manufacturing processes set the foundation for customer satisfaction. Early involvement ensures quality design, and our product teams strive for flawless launches and zero defects using proven tools and methods, including:

### CONCURRENT ENGINEERING

- Design for manufacturability reviews
- PFMEAs that are linked to DFMEAs, and customer requirements, PPAP

### OPTIMIZED PROCESS CONTROLS

- Error proofing
- Commitment to continuous training
- Detailed production control plans
- Standardized, general operating procedures
- First off inspection, line audits, SPC

### SIX SIGMA CULTURE

- Workmanship according to IPC Standards
- Control of inputs to reduce variation
- Component level traceability
- Predictive maintenance
- 6-S Approach

## GATE STAGED PRODUCT DEVELOPMENT PROCESS

M.I.S. ensures satisfaction with a 6-phase gate product development process. For new projects, the scope is defined and the process begins at the appropriate phase.

### MULTI-PHASE PROCESS

- Manages all program deliverables with respect to cost, quality, delivery, and continuous improvement.
- Defined phase gate exit and transition criteria with forward looking risk assessments.
- Senior management involvement via our formal phase gate sign off processes.
- Based largely on APQP structure.
- Exceeds TS 16949 requirements.
- Integrates all aspects of product, process and test development.
- Supports conventional and accelerated development programs.

